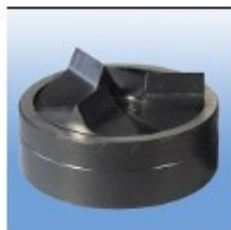


ALFA ROUND PUNCHES AND DIES

[Download Catalog](#)

E-Rail offers a comprehensive line of punches (round, square and rectangular) that will meet all of your punching applications. We can also supply special dies within eight weeks.



TRISTAR

Description:	Set	Punch	Die
1/2" Nominal	01770	01675	01676
3/4" Nominal	01686	01687	01688
1" Nominal	01776	01696	01697
1-1/4" Nominal	01780	01709	01710
1/2" Conduit	01775	01693	01694
3/4" Conduit	01777	01699	01700
1" Conduit	01788	01792	01793
1-1/4" Conduit	01789	01794	01795
1-1/2" Conduit	01790	01796	01797
2" Conduit	01791	01798	01799
22.5mm	01692	01693	01694
30.5mm	01779	01704	01705

Set includes punch, die, screw



TRISATR PLUS
Stainless Steel

Description:	Set	Punch	Die
1/2" Nominal			
3/4" Nominal	01603	01604	01605
1" Nominal	01659	01660	01661
1-1/4" Nominal	01618	01619	01620
1/2" Conduit	01609	01610	01611
3/4" Conduit	01612	01613	01614
1" Conduit	01618	01619	01620
1-1/4" Conduit	01624	01625	01626
1-1/2" Conduit	01630	01631	01632
2" Conduit	01640	01641	01644
22.5mm	01609	01610	01611
30.5mm	01615	01616	01617

Set includes punch, die only



STANDARD

Description:	Set	Punch	Die
1/2" Nominal	01002	01003	01004
3/4" Nominal	01026	01027	01028
1" Nominal	01058	01059	01060
1-1/4" Nominal	01102	01103	01104
1/2" Conduit	01046	01047	01048
3/4" Conduit	01069	01071	01072
1" Conduit	01118	01119	01120
1-1/4" Conduit	01162	01161-ST	01161-MA
1-1/2" Conduit	01170	01171	01172
2" Conduit	01206	01207	01208
22.5mm	01046	01047	01048
30.5mm	01094	01095	01096

Set includes punch, die, screw